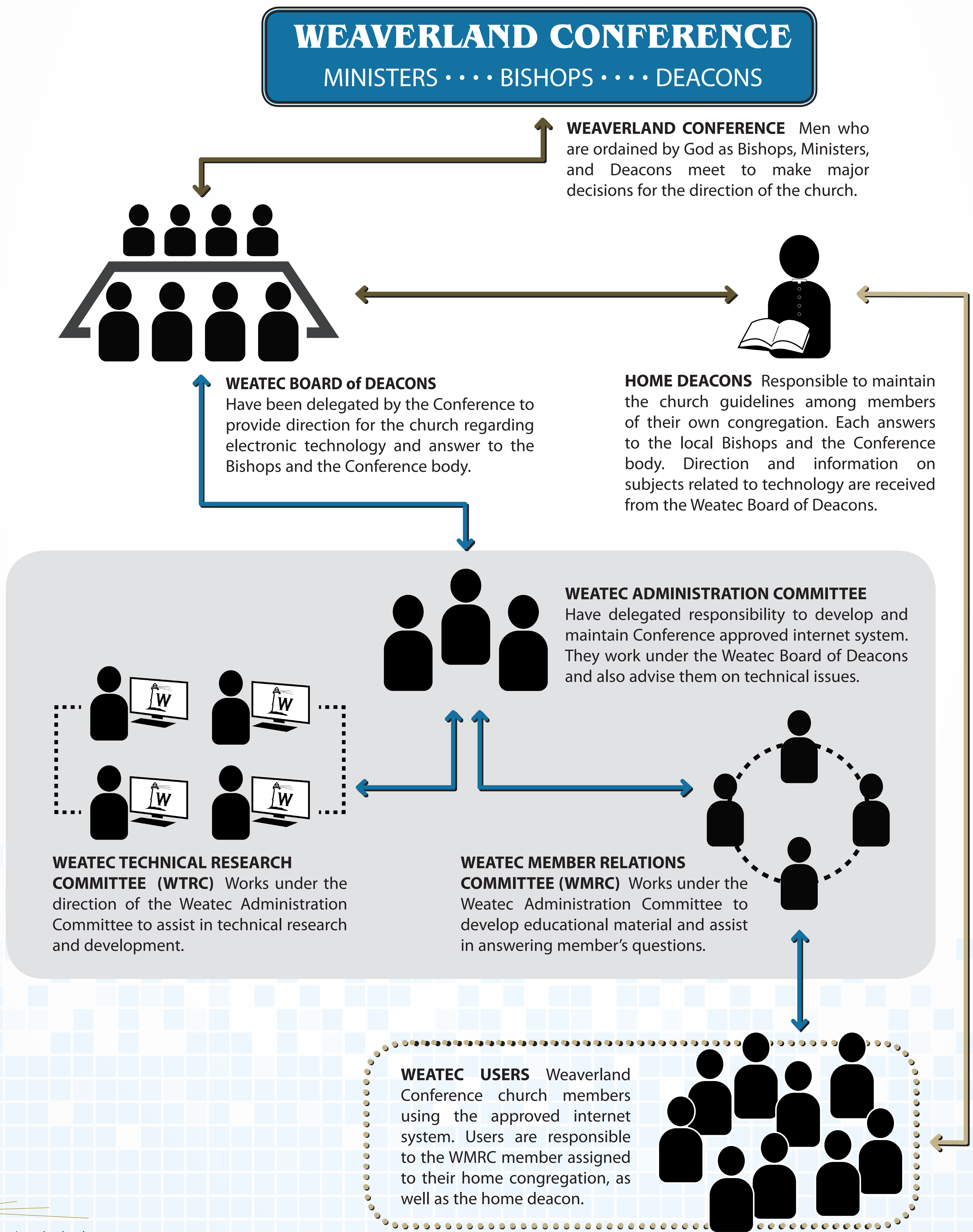


Structure of the Weatec Committees

Weatec was formed in 2006 by the Weaverland Conference deacons to assist the Weaverland Conference with creating and maintaining a conference approved internet system. Today these deacons, one representative for each church district, are referred to as the Weatec Board of Deacons. The Weatec Board of Deacons works under the decisions of the bishops and the conference body. The men that they have appointed to create and maintain the conference approved internet system are called the Weatec Administration Committee and they work under the direction of the Weatec Board of Deacons.

With approval from the Weatec Board of Deacons, the Weatec Administration Committee has created two sub committees to work under their direction to assist in the work. The Weatec Technical Research Committee was formed to assist in researching technical solutions to creating and maintaining safe internet usage. The Weatec Member Relations Committee was formed to develop needful educational material and assist in answering questions relating to technology that arise from members of the church. All Weatec committee members are dedicated to working under the Weaverland Conference to create safe guidelines for the use of electronic technology.



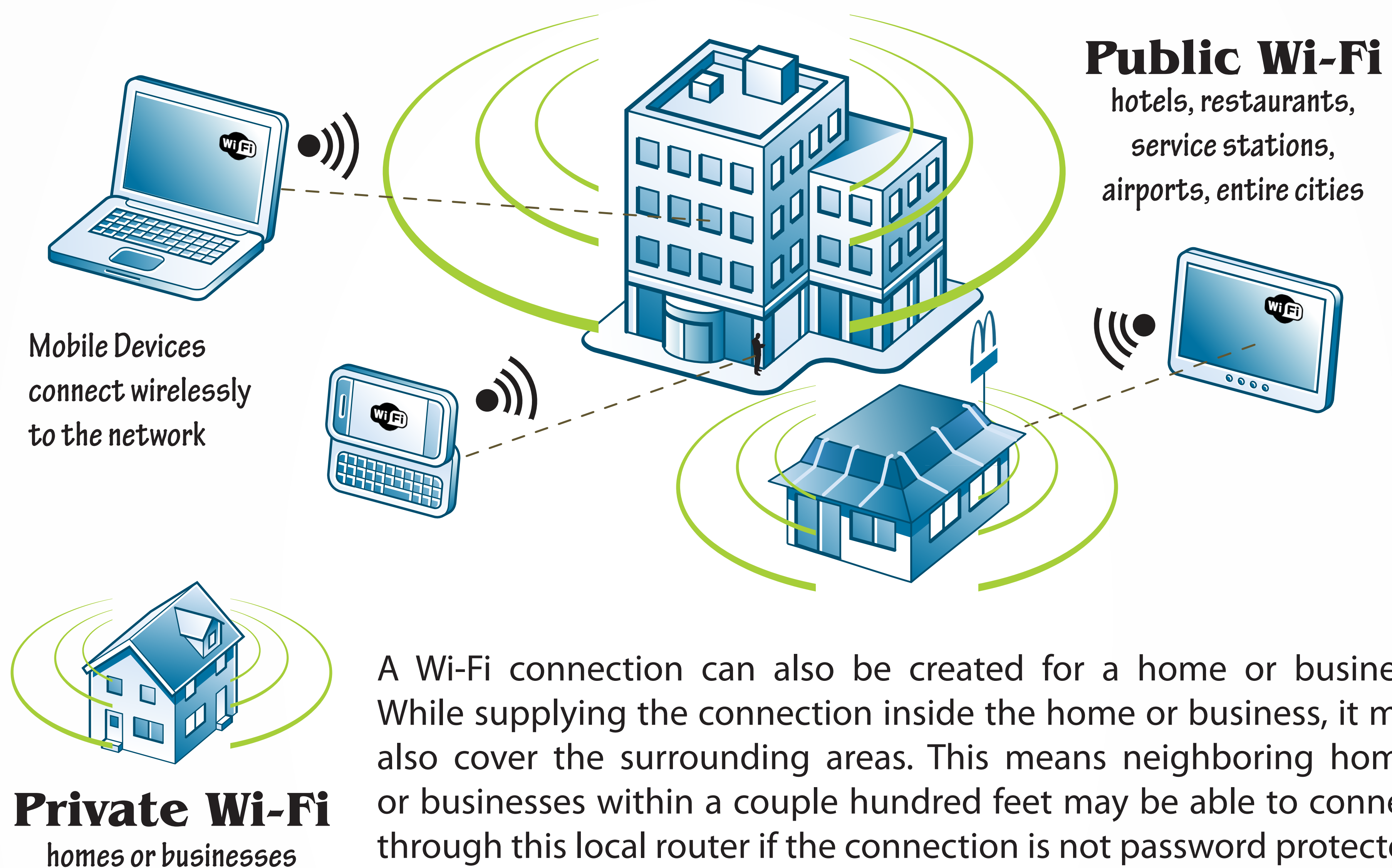
Wireless Internet Connections



What is Wi-Fi?

Wi-Fi is a local area wireless networking technology that allows electronic devices in the near vicinity to connect to the internet without wires. Most portable devices are Wi-Fi compatible, including laptops, tablet computers, cameras, audio players, basic cellphones, and smartphones.

Public Wi-Fi is offered free of charge at many public places such as McDonalds and other restaurants, hotels, airports, and even entire cities. Such public systems typically have a strong enough signal to allow internet access throughout the building and the surrounding exterior and parking areas. Public Wi-Fi is unfiltered and is not as secure as a wired connection and should be used only with the proper safeguards in place.



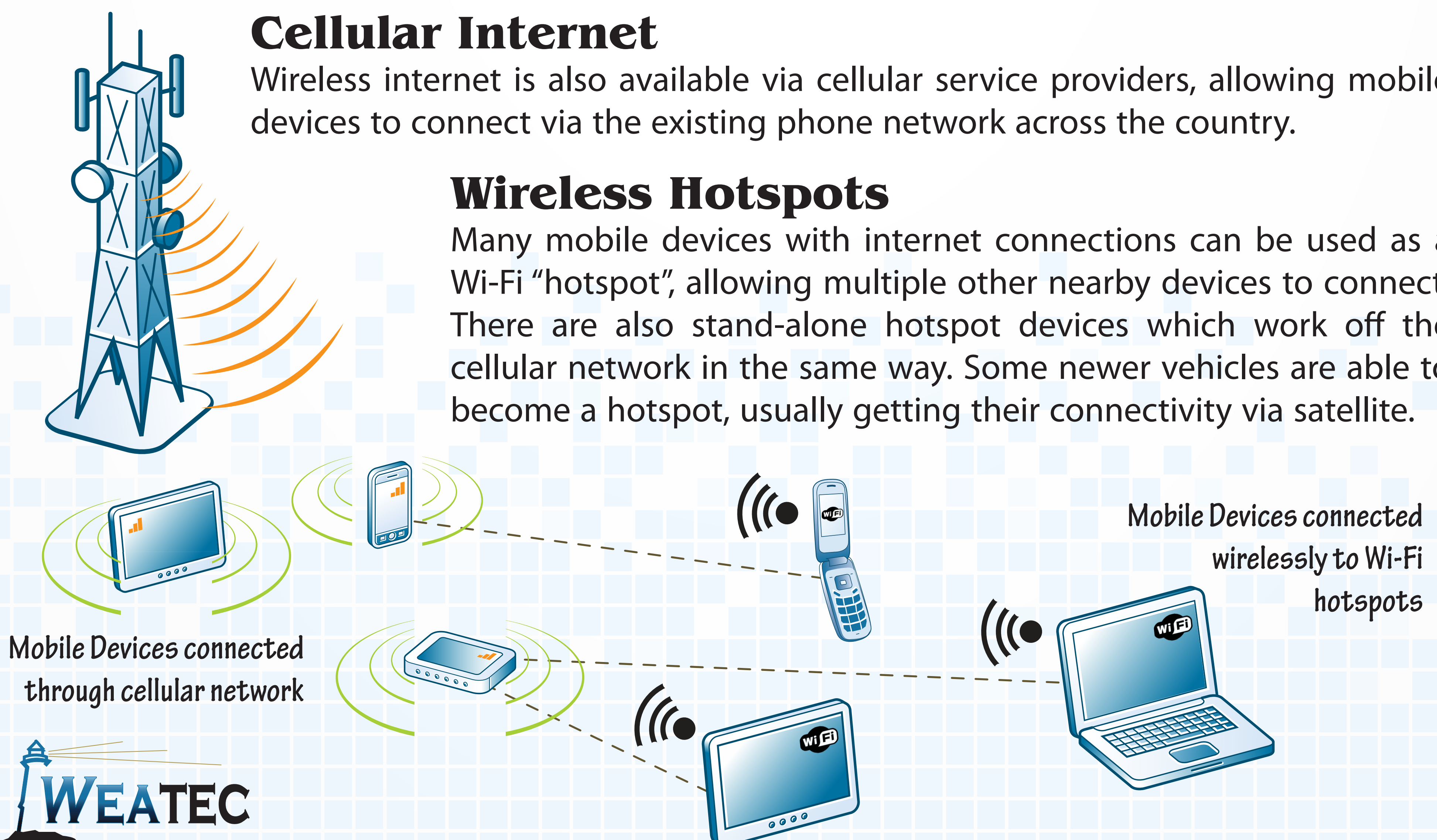
A Wi-Fi connection can also be created for a home or business. While supplying the connection inside the home or business, it may also cover the surrounding areas. This means neighboring homes or businesses within a couple hundred feet may be able to connect through this local router if the connection is not password protected.

Cellular Internet

Wireless internet is also available via cellular service providers, allowing mobile devices to connect via the existing phone network across the country.

Wireless Hotspots

Many mobile devices with internet connections can be used as a Wi-Fi "hotspot", allowing multiple other nearby devices to connect. There are also stand-alone hotspot devices which work off the cellular network in the same way. Some newer vehicles are able to become a hotspot, usually getting their connectivity via satellite.



Data Storage Devices

Today's data storage devices come in many shapes and forms. Because of their compact size and significant storage capacity they have become popular for various uses, allowing data to be easily transferred to multiple devices without an internet connection.

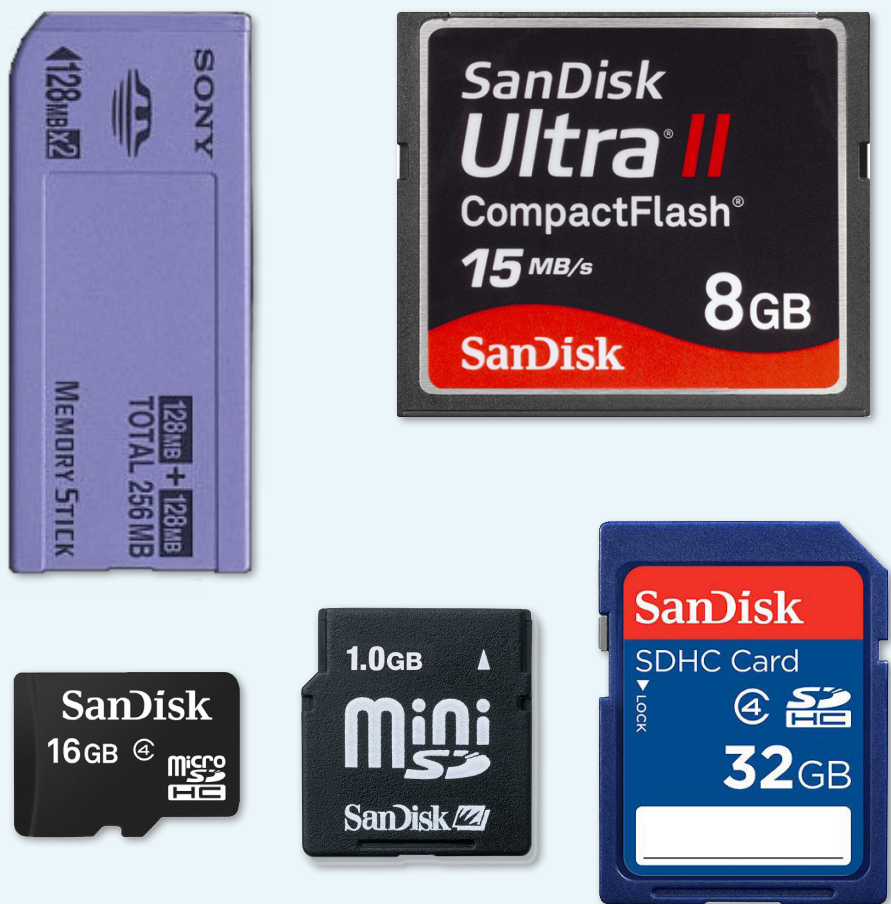
Media Types Virtually all types of electronic media can be placed on any of these storage devices, including documents, computer programs, pictures, music, and videos.

Compatibility These data storage devices are compatible with many electronics. USB flash drives are commonly used to transfer files from one device to another, and memory cards can be used the same way. Files can be uploaded with a computer or other device, then be transferred to a laptop, mobile phone, tablet computer, printer, etc. Many recent cars also accept USB flash drives for music, or even video if equipped with a navigation screen.

CD



Memory Cards



USB Flash Drives



 Capacity	 Documents	 Photos	 Music	 Videos
64GB	65,500	13,100	570 hours	32 hours
32GB	32,800	6,550	285 hours	16 hours
16GB	16,400	3,300	140 hours	8 hours
8GB	8,200	1,650	70 hours	4 hours
4GB	4,100	800	35 hours	2 hours
700MB (CD)	700	140	6 hours	0.3 hours

