

ESET Internet Security Instruction Manual (for Windows)



Have you completed your Weatec Application and received your accountability ID number? If not, contact your deacon for an application before continuing to setup this Weatec approved filter!

Who is it for?

ESET Internet Security is an antivirus and parental control software package available by itself or as part of home and small business packages for Windows, Mac, and Android devices. It is installed and managed on the device, not through the cloud. The content filtering must be configured not only for each device, but also for each user account on the device. In order to eliminate a loophole that allows new user accounts to circumvent content filtering, users should be given standard (not administrator) user accounts on Windows machines. In spite of those limitations, ESET Internet Security exhibited outstanding filtering abilities in Weatec testing.

Pros:

- Free 30-day trial available
- Approximately 140 configurable categories
- Includes antivirus
- Outstanding content filtering abilities
- Can filter some https pages

Cons:

- Not ideal for large businesses since each device needs to be licensed.
- Does not automatically filter new user accounts. Users should be given standard user accounts on Windows so that they cannot set up new accounts to bypass the filter.
- Content filtering needs to be set up for each device and user account, although there is a handy button to copy category settings from another user account.

Note: After testing, ESET Internet Security has been approved as an acceptable category-based content filter if configured to meet the requirements set forth in the Weaverland Conference Electronic Technology Usage Guidelines. Please remember that no filter can be guaranteed to filter out all objectionable content; therefore the Weatec Accountability Software must be installed on all devices in order to be in compliance with Weaverland Conference guidelines. By logging all web traffic, the Weatec Accountability Software fosters brotherhood accountability. Keep in mind that, even if objectionable content is missed by ESET Internet Security, the content will still trigger a flag on the accountability server. Use the following configuration as a minimum; there is nothing preventing you from choosing stricter settings.

How to Acquire

ESET produces many filters and antivirus products. As of April 2016, only ESET Internet Security and the packages it is a part of have been approved by the Weatec Technical Research Committee for the purpose of filtering internet content. ESET Internet Security can be acquired through resellers and the ESET website at www.eset.com/us/home/internet-security/.

How to Install (Windows)

Follow the excellent installation guide at

download.eset.com/com/ezet/apps/home/eis/windows/latest/ezet_eis_10_userguide_enu.pdf.

Note this quote from the guide:

“Each person accessing your computer should use their own Windows user account. Without completing this important step, Parental control is ineffective in shielding children from inappropriate web content.” In addition, to prevent users from being able to get around the content filtering, user accounts should not be administrative accounts.


How to Configure

The Parental control (**Internet Filter**) module allows you to configure Internet control settings, which provide automated tools to help set restrictions for devices and services. The goal is to prevent Internet Users from accessing pages with inappropriate or harmful content.

Parental control (**Internet Filter**) lets you block webpages that may contain potentially offensive material. In addition, you can prohibit access to more than 40 pre-defined website categories and over 140 subcategories.

To activate Parental control (**Internet Filter**) for a specific user account, follow the steps below:

1. By default Parental control is disabled in ESET Internet Security. There are two methods for activating Parental control:

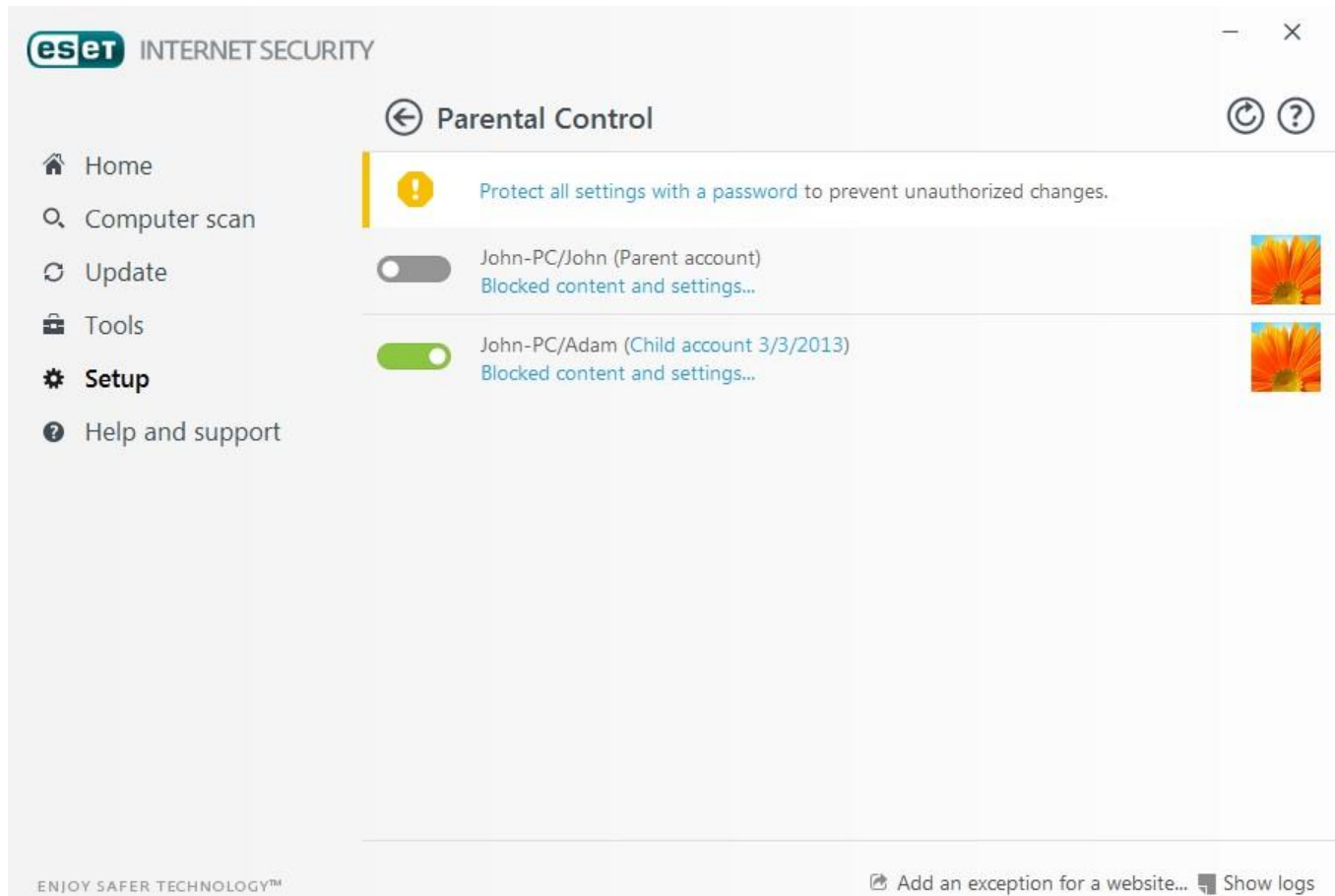
- o Click  in the **Setup > Security tools > Parental control** from the main program window and change the Parental control state to enabled.
- o Press F5 to access the **Advanced Setup** tree, navigate to **Web and email > Parental Control** and then engage the switch next to **Integrate into system**.

2. Click **Setup > Security tools > Parental control** from the main program window. Even though **Enabled** appears next to **Parental control**, you must configure Parental control for the desired account by clicking **Protect child account** or **Parent account**. In the next window select the birth date to determine the level of access and

recommended age-appropriate web pages. Parental control will now be enabled for the specified user account. Click **Blocked content and settings...** under the account name to customize categories you want to allow or block in the Categories tab. To allow or block custom web pages that do not match a category, click the Exceptions tab.



! IMPORTANT WEATEC SETTING!!

1. For Weatec approved you need must set the Categories manually and not use the age-appropriate settings.



If you click **Setup > Security tools > Parental control** from the main product window of ESET Internet Security, you will see that the main window contains:

Windows user accounts

If you have created a role for an existing account, it will be shown here. Click the slider  so that it will display a green check mark  next to Parental control for the account. Under the active account, click **Blocked content and settings...** to see the list of allowed categories of web pages for this account and blocked and allowed web pages.


IMPORTANT

To create a new account (for example, for a child), use the following step-by-step instructions for Windows 7 or Windows Vista:

2. Open **User Accounts** by clicking the **Start** button (located at the bottom left side of your desktop), clicking **Control Panel** and then clicking **User Accounts**.
3. Click **Manage User Account**. If you are prompted for an administrator password or confirmation, type the password or provide confirmation.
4. Click **Create New Account**.
5. Type the name you want to give the user account, click an account type, and then click **Create Account**.
6. Reopen the Parental control pane by clicking again from the main program window of ESET Internet Security to **Setup > Security tools > Parental control**.

The bottom part of a window contains

Add an exception for a website... – The specific website can be allowed or blocked according your preferences for each parental account separately.

Show logs – This shows a detailed log of the Parental control activity (blocked pages, the account, the page was blocked for, category, etc.). You can also filter this log based on the criteria you choose by clicking 

Filtering.

Parental control

After disabling Parental control, a **Disable Parental control** window will appear. Here you can set the time interval for which protection is disabled. The option then changes to **Paused** or **Disabled permanently**. It is important to protect the settings in ESET Internet Security with a password. This password can be set in the Access setup section. If no password is set the following warning will appear – **Protect all settings with a password** to prevent unauthorized changes. The restrictions set in Parental control only affect the standard user accounts. Because an Administrator can override any restriction, they will not have any effect.

IMPORTANT WEATEC SETTING!!

7. **HTTPS (SSL) communication is not filtered by default. Therefore, Parental control cannot block web pages that begin with *https://*. To enable this feature, turn on the **Enable SSL/TLS protocol filtering** setting in the **Advanced setup** tree under **Web and email > SSL/TLS**.**

NOTE

Parental control requires Application protocol content filtering, HTTP protocol checking and Personal firewall to be enabled in order to function properly. All of these functionalities are enabled by default.

4.4.1.1 Categories

Engage the switch next to a category to allow it. If you leave the switch off, the category will not be allowed for that account.

Dialog box titled "Edit user account" with a help icon (?). The "Categories" tab is selected. The following categories are listed with their respective age ratings and toggle switches (all are currently turned on):

Category	Age Rating	Toggle
Adult	18+	On
Aggressive	18+	On
Alcohol & Tobacco	18+	On
Anonymizers	18+	On
Arts	Everyone	On
Automotive		On

Buttons: Copy, OK

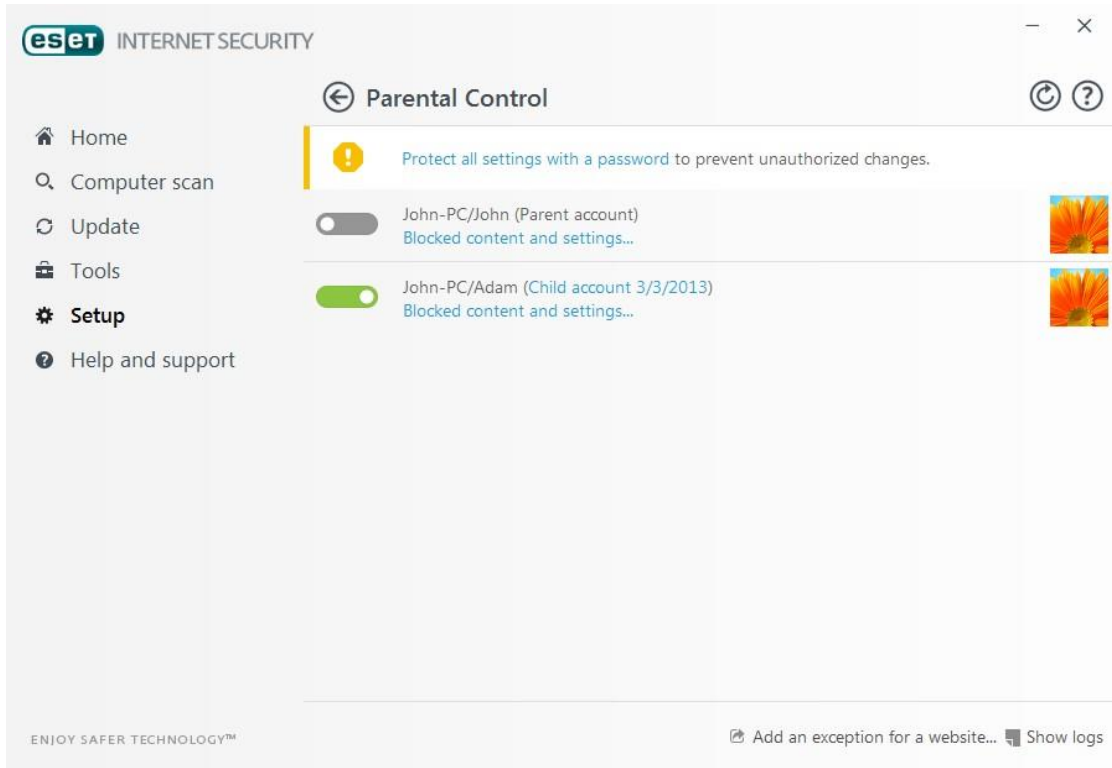
Here are some examples of categories (groups) that users might not be familiar with:

- **Miscellaneous** – Usually private (local) IP addresses such as intranet, 127.0.0.0/8, 192.168.0.0/16, etc. When you get a 403 or 404 error code, the website will also match this category.
- **Not resolved** – This category includes web pages that are not resolved because of an error when connecting to the Parental control database engine.
- **Not categorized** – Unknown web pages that are not yet in the Parental control database.

4.4.1.2 Website exceptions

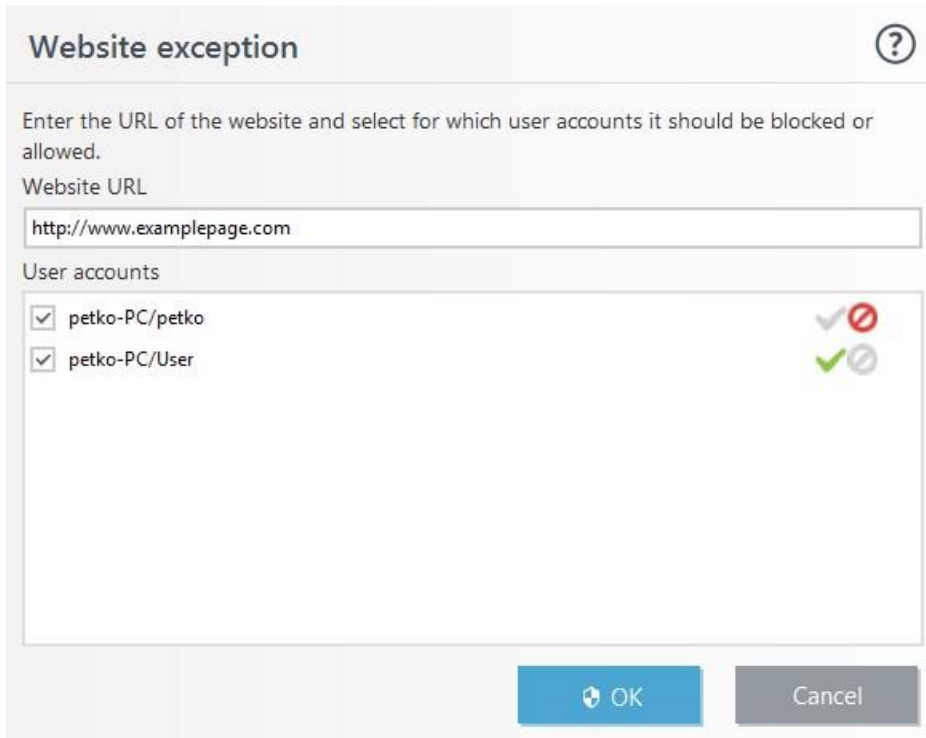
To add an exception for a website, click **Setup > Security tools > Parental control** and then click **Add an exception for a website**.

Enter a URL in the

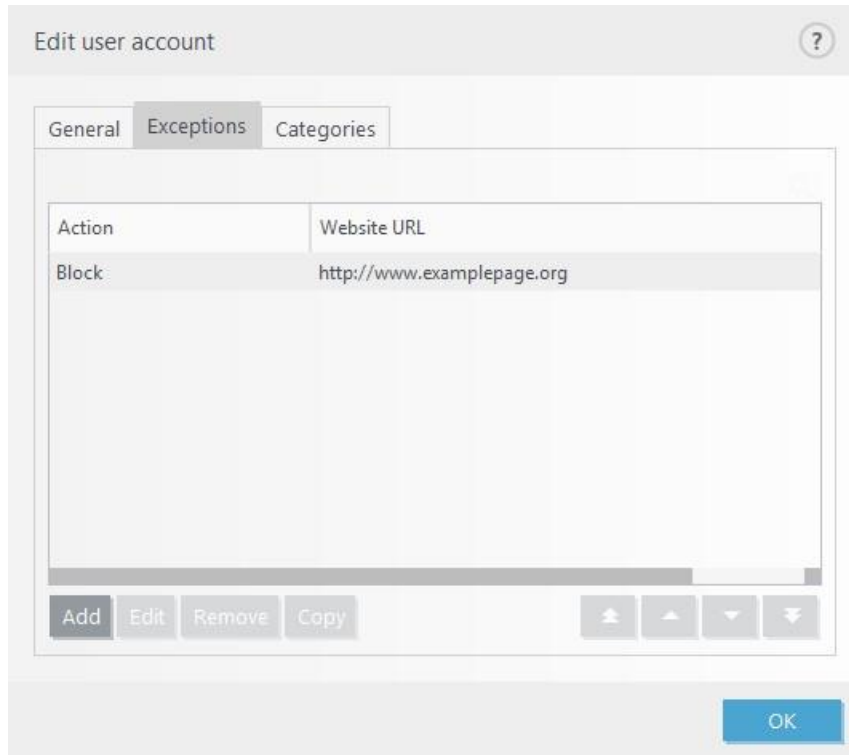


✓ allowed) or ✗ (blocked) for each specific user account and then

Website URL field, select click OK to add it to the list.



To delete a URL address from the list, click Setup > Security tools > Parental control, click Blocked content and settings under the desired user account, click the Exception tab, select the exception and then click Remove.



In the URL address list, the special symbols * (asterisk) and ? (question mark) cannot be used. For example, web page addresses with multiple TLDs must be entered manually (*examplepage.com*, *examplepage.sk*, etc.).
When you

add a domain to the list, all content located on this domain and all subdomains (for example, *sub.examplepage.com*) will be blocked or allowed based on your choice of URL-based action.

i NOTE

Blocking or allowing a specific web page can be more accurate than blocking or allowing a category of web pages.

Be careful when changing these settings and adding a category/web page to the list.

Note on Limited Use Categories: The X categories are unacceptable and must be unchecked. The acceptable categorizes should be checked. The amber categories are limited use. They are shown unchecked; however, if your business has need of a limited-use category and you understand the risks as described in the [Weaverland Conference Electronic Technology Usage Guidelines](#), you may mark them checked.

Edit user account

General Exceptions Categories

Adult 18+	<input type="checkbox"/> X	Health Everyone	<input type="checkbox"/> X	Shopping Everyone	<input type="checkbox"/> X
Aggressive 18+	<input type="checkbox"/> X	Hobbies & Interests Everyone	<input type="checkbox"/> X	Sports Everyone	<input type="checkbox"/> X
Alcohol & Tobacco 18+	<input type="checkbox"/> X	Kids Everyone	<input type="checkbox"/> X	Technology Everyone	<input checked="" type="checkbox"/>
Anonymizers 18+	<input type="checkbox"/> X	Lifestyle 12+	<input type="checkbox"/> X	Travel Everyone	<input checked="" type="checkbox"/>
Arts Everyone	<input type="checkbox"/> X	Malicious Restricted	<input type="checkbox"/> X		
Automotive Everyone	<input checked="" type="checkbox"/>	Miscellaneous Everyone	<input type="checkbox"/> X		
Business & Careers Everyone	<input checked="" type="checkbox"/>	News, Portal & Search Everyone	<input type="checkbox"/> X		
Chats & Social Network 12+	<input type="checkbox"/> X	Not Categorized 18+	<input type="checkbox"/> X		
Communication Everyone	<input checked="" type="checkbox"/>	Not Resolved 18+	<input type="checkbox"/> X		
Criminal Activities Restricted	<input type="checkbox"/> X	Online Ads 12+	<input type="checkbox"/> X		
Dynamic Everyone	<input type="checkbox"/> X	Pets Everyone	<input type="checkbox"/> X		
Education Everyone	<input checked="" type="checkbox"/>	Public, Government & Law Everyone	<input type="checkbox"/> X		
Family & Parenting Everyone	<input type="checkbox"/> X	Real Estate Everyone	<input checked="" type="checkbox"/>		
Fashion Everyone	<input type="checkbox"/> X	Religion Everyone	<input type="checkbox"/> X		
Finance Everyone	<input checked="" type="checkbox"/>	Science Everyone	<input type="checkbox"/> X		
Food & Drink Everyone	<input checked="" type="checkbox"/>	Sex Education 12+	<input type="checkbox"/> X		

Copy

How to Get Help

Search the ESET Knowledgebase: <http://support.eset.com>

or

Contact the Weatec Helpdesk:

Phone: (717) 723-8978

Email: helpdesk@weatec.com